



Installation Guide

Everything you will need to download can be found at:

<http://www.forexfury.com/members-area/>

Quick Install:

1. Download and open the Forex Fury.zip from the members area.
2. Open MT4, Click FILE > OPEN DATA FOLDER > DOUBLE CLICK MQL4
 - a. Put Forex Fury.ex4 in the Experts Folder
 - b. Put Fury.dll in the Libraries Folder
3. Restart MT4
4. Authenticate your account in the members area
5. After authenticating, drag Forex Fury.ex4 from the experts Tab in MT4 onto the GBPUSD M15 chart and enter the username you just authenticated. We now trade more than just GBPUSD, see more pairs on the front page of our website, with settings.

There is a full installation video in the members area if you need a more detailed approach

Full Install:

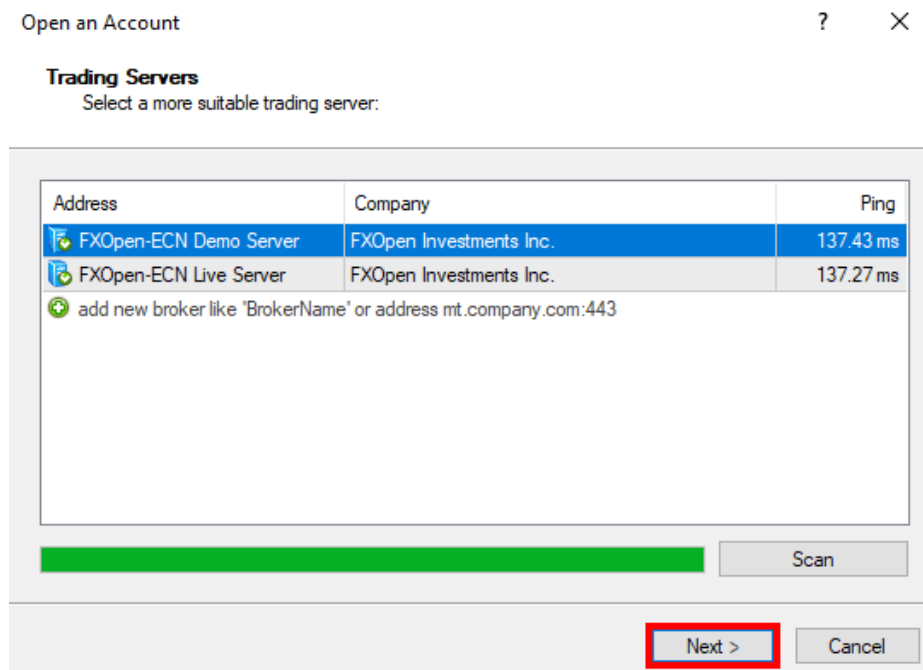
Broker Setup

In order to trade Forex you will require a broker (skip step if you have a broker). If you don't have a broker, you can use [FXOpen](#). If you are in the US, you can use any low spread broker. There are hundreds available including Forex.com, FXCM, FXDD, PaxForex etc. Feel free to research and find one you prefer.

INSTALL MT4/MT5 PLATFORM

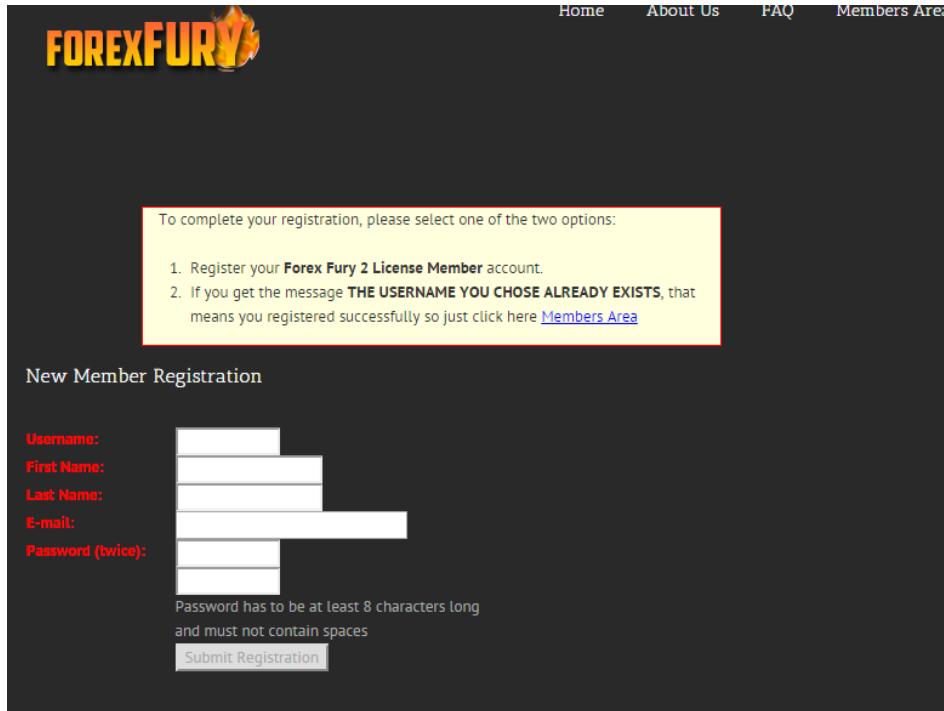


Now you can open a demo account or if you already opened an account skip to the second box and login to the account you already created.



Installing Forex Fury EA

After you order you will get an email with your registration link to the members area, it looks like this:



The screenshot shows the Forex Fury website's registration page. At the top, there is a navigation bar with links for Home, About Us, FAQ, and Members Area. The main heading is "FOREXFURY" with a flame icon. Below the heading, a yellow box contains instructions for completing registration. The "New Member Registration" section includes input fields for Username, First Name, Last Name, E-mail, and Password (twice). A "Submit Registration" button is at the bottom of the form. A note specifies that the password must be at least 8 characters long and must not contain spaces.

Home About Us FAQ Members Area

FOREXFURY

To complete your registration, please select one of the two options:

1. Register your **Forex Fury 2 License Member** account.
2. If you get the message **THE USERNAME YOU CHOSE ALREADY EXISTS**, that means you registered successfully so just click here [Members Area](#)

New Member Registration

Username:

First Name:

Last Name:

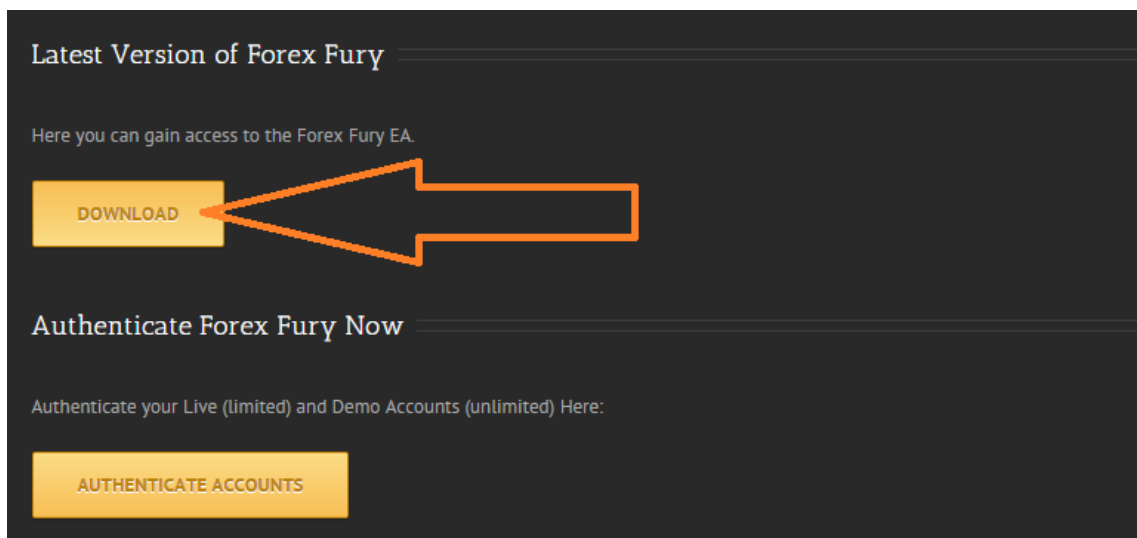
E-mail:

Password (twice):

Password has to be at least 8 characters long and must not contain spaces

If you get the message **THE USERNAME YOU CHOSE ALREADY EXISTS**, that means you registered successfully so just click here [Members Area](#)

After you login, click download, get the .zip file and put it on your desktop.



The screenshot shows the "Latest Version of Forex Fury" section of the website. It includes a heading, a subheading, and a "DOWNLOAD" button. Below this is the "Authenticate Forex Fury Now" section, which includes a subheading and an "AUTHENTICATE ACCOUNTS" button. An orange arrow points from the "DOWNLOAD" button to the right.

Latest Version of Forex Fury

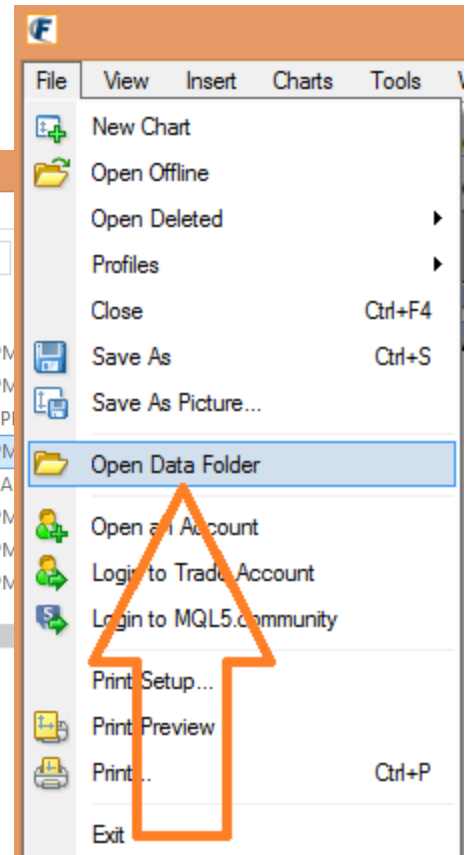
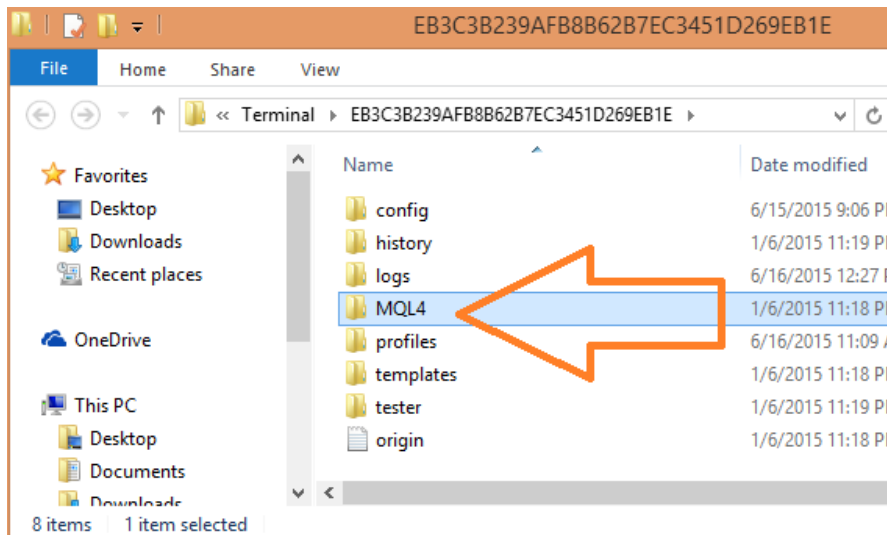
Here you can gain access to the Forex Fury EA.

Authenticate Forex Fury Now

Authenticate your Live (limited) and Demo Accounts (unlimited) Here:

Now you have the files. Open MT4 > CLICK FILE > OPEN DATA FOLDER

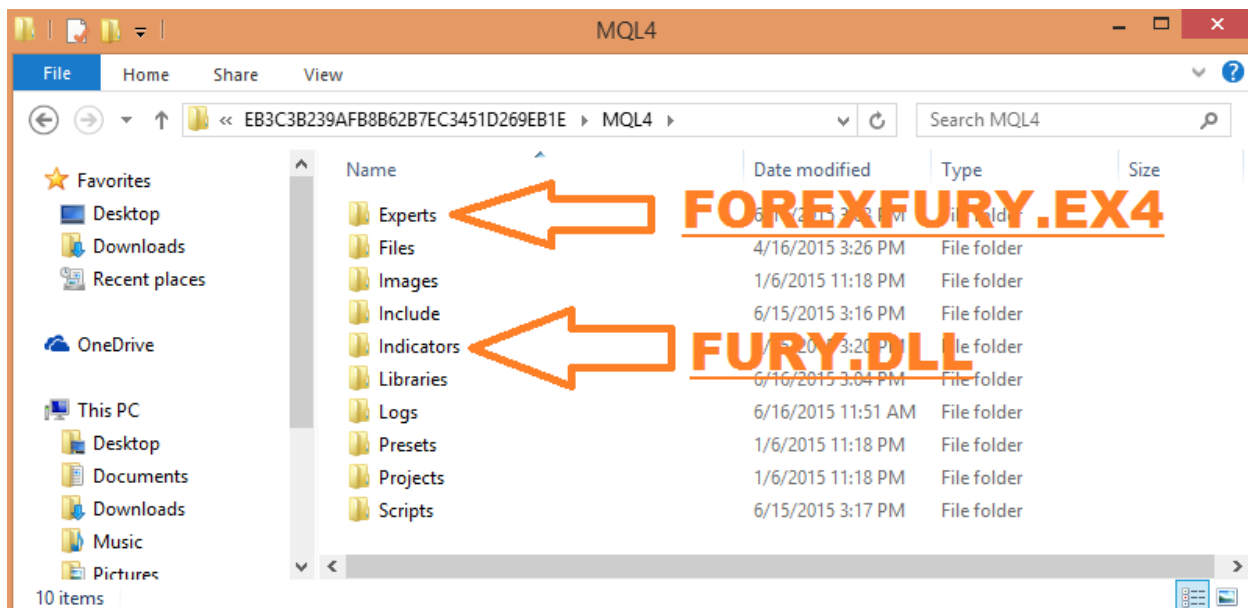
Then You will need to click MQL4



Then take the Forex Fury.EX4 file and put it in the Experts Folder.

Then take the Fury.dll file and put it in the Libraries Folder.

Restart MT4.



Now Authenticate


Click here in the members area.

Here you can gain access to the Forex Fury EA.

[DOWNLOAD](#)

Authenticate Forex Fury Now

Authenticate your Live (limited) and Demo Accounts (unlimited) Here:

[AUTHENTICATE ACCOUNTS](#) 

Authenticate

In order to use Forex Fury Live or Demo accounts you have to add them here.

- If you add a live account it may takes a few minutes to work.
- If you stop using a live account by removing it from the chart give the system 30 minutes to recognize that you stopped using the account and then you can add a new live account. If you try to add too many live accounts your account will freeze until we have someone investigate the issue.

You are a **Forex Fury 1 License Member, Forex Fury 2 License Member** with unlimited demo accounts.

Username: Your username is **admin**

MT4 Account Number:

[Submit](#)

The username is easy, this form tells you your username, mine is admin, yours will be whatever it says instead of admin.

Just plug that in.

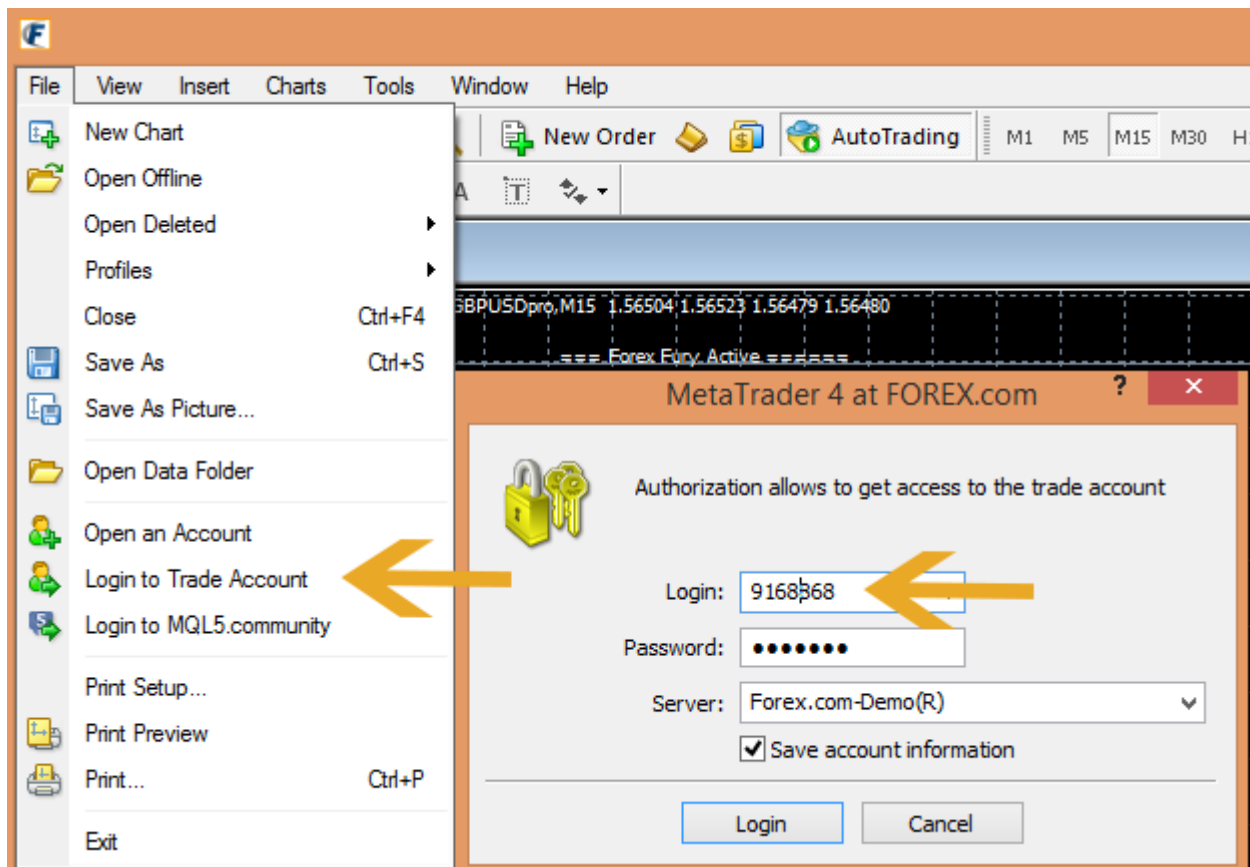
Next get your MT4 Account Number

To get your MT4 account number go into MT4 and Click on File > Login.

Or look at the top left of MT4, or the top middle of MT4.

Or go into Tools > Options > Server

EXAMPLE IMAGE:



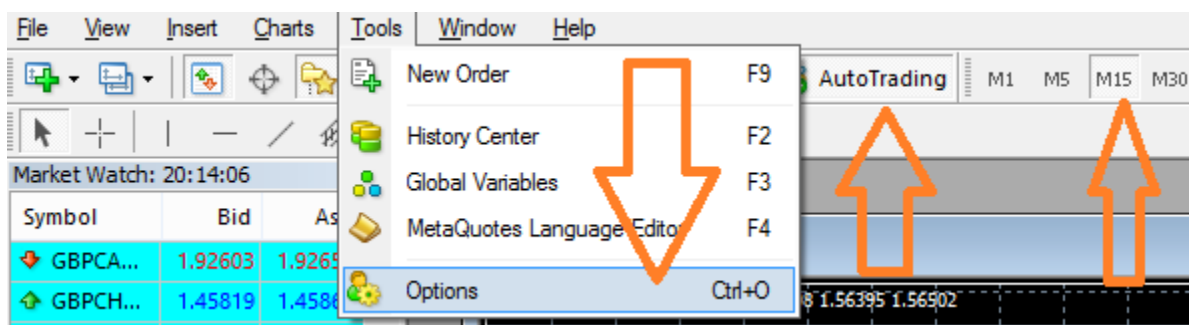
In the example I'm giving you I would put.

Username: admin

Account:9168868

Then I would click submit.

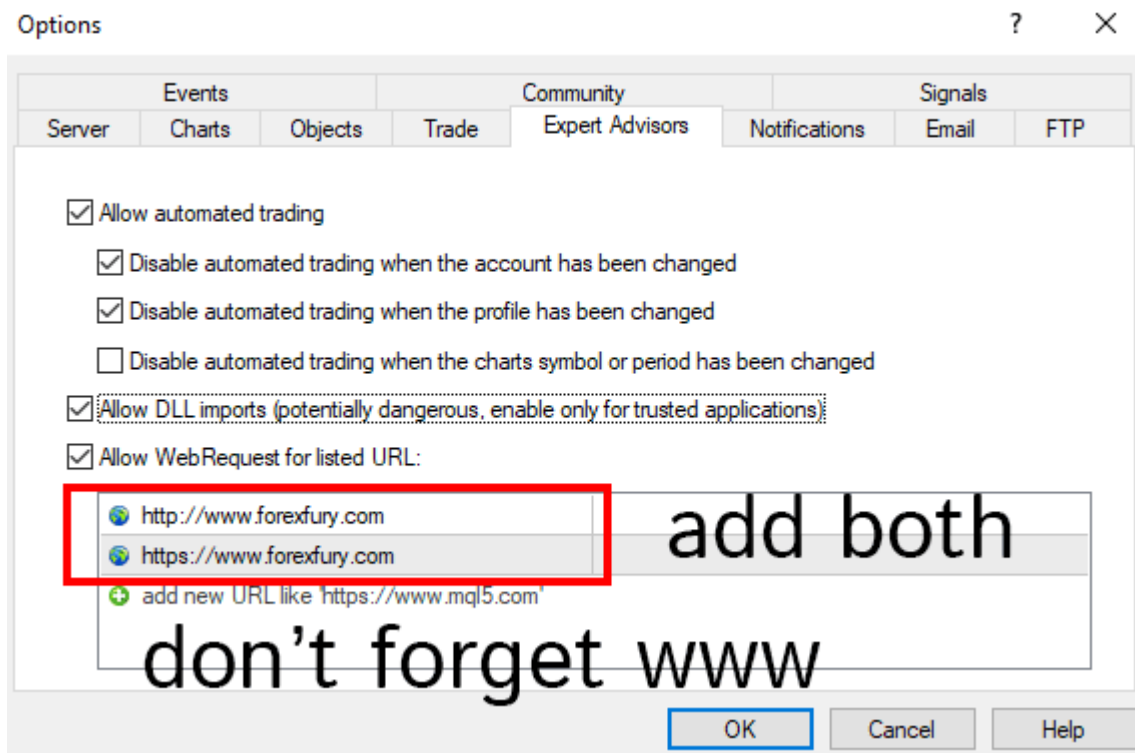
Now we are ready to set up MT4 and drop the software on the chart. Open Mt4.



Make sure Timeframe is M15 for the chart.

Makes sure Autotrading is clicked in and Green.

Go to Tools > Options > Expert Advisors Tab

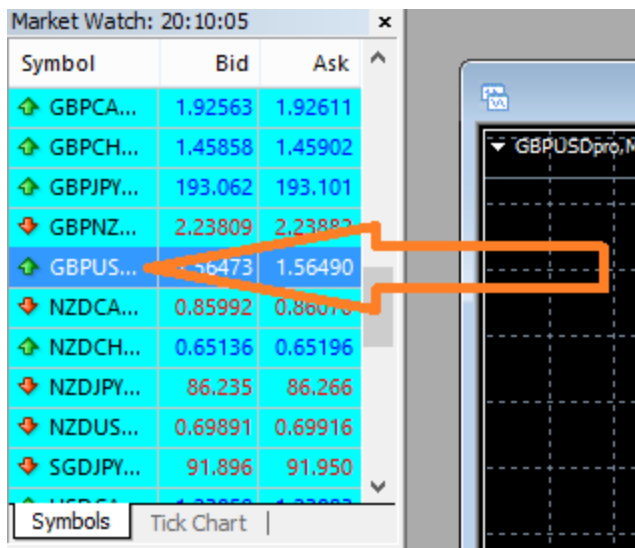


Allow Automated Trading Ticked.

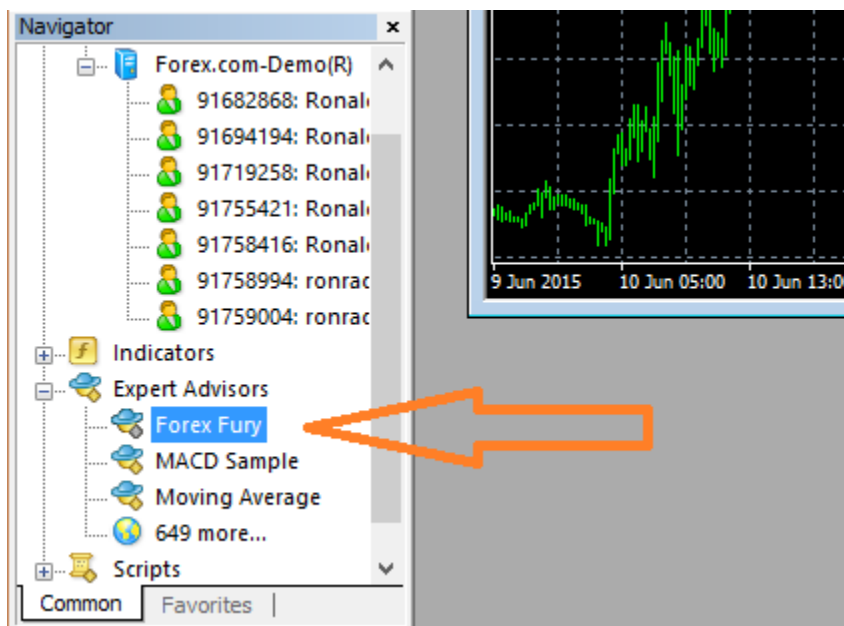
Allow DLL imports ticked.

Allow Web requests ticked.

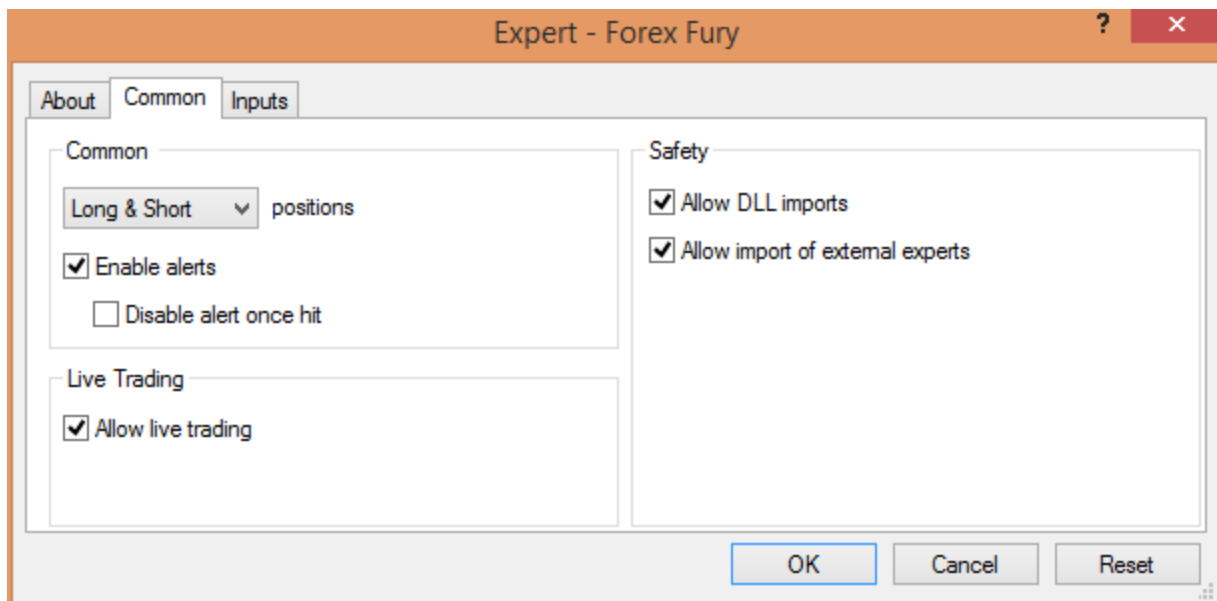
Double click in here and add both urls



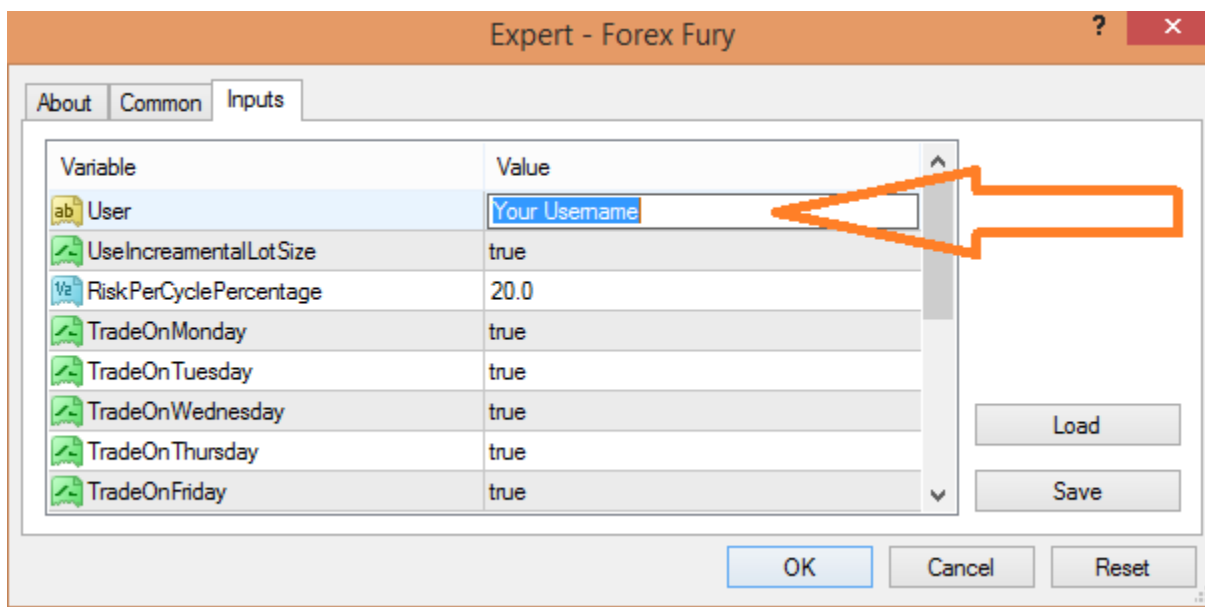
Click GBPUSD (or see other pairs now compatible with on front page of website) in market watch and drag it into the open area in the middle. Close the other charts there.



Click on Forex Fury in Navigator Expert Advisors and drag it onto the chart.



Have the common tab ticked like this.



Double click where it says your username, delete that, and put your username in, the one you authenticated and signed up with.



Installed Properly, enjoy!

Settings:

Here is a quick breakdown of our settings / properties.

- Useincreamentallotsize – this is our money management, it can be set to TRUE or FALSE. If FALSE, you can set your own lot size.
- Lot_Size – set your own lot size here.
- RiskPerCyclePercentage – this is the value of money management in percentage. If you set this number at 20, the EA will limit the loss to 20% of your account.
- TradeOnMonday, TradeOnTuesday, TradeOnWednesday, TradeOnThursday, TradeOnFriday – this is self-explanatory. You can set the days in which you want the EA to trade.
- MaxSpread – this value will determine if the EA will open trades or not based on your broker spread. If your broker spread is above our default value of 2.5, then you need to increase the max spread to accommodate.
- Take Profit – this is the amount of pips Fury will close winning trades at.
- Stop Loss – this is the amount of pips Fury will close losing trades at. We keep the SL hidden from the broker, but it's on every trade.
- MaxOrders – this determines how many trades are placed at once. For FIFO, this should be set to 1.
- StartTradingTime, EndTradingTime – this is a set time when the EA is allowed to open trades.

- MaxSlippage – this value will determine if Fury will open trades or not based on your broker slippage.
- MagicNumber – this value just needs to be different on each chart if you run multiple pairs in one account.

V2 Addition (Trailing Stop)

- Start: It's the start point for first trailing.
- Step: it's the distance between price and SL after first trailing. so after first trail there must be X points to apply the next trailing.
- Stop: it's the SL distance after each trailing.

Example:

Start: 100

Step: 50

Stop: 20

Order Type: Buy

Order Open Price: 1.12350

1. Price reaches 1.12450 first trail happens and SL moves to 20 points below current price which is 1.12430

2. Next trail will happen at 1.12480 and SL moves to 1.12460

2. Next trail will happen at 1.12510 and SL moves to 1.12490

REQUIRED CHANGE

- StartTradingTime = 23:00:00 : Start trading
- EndTradingTime = 23:59:00 : End trading time it is best value is one hour from the start trading time

First, ask your broker their GMT offset.

Then:

If your Forex Broker GMT 0 then set StartTradingTime to 20:00 and EndTradingTime to 20:59

If your Forex Broker GMT is -2 Then we subtract 2 from 20:00 and we put STT at 18:00 and ETT at 18:59

If Your Forex Broker GMT is +3 Then we add 3 from 20:00 and we get STT at 23:00 and ETT at 23:59

November 1 – April 1 add +1 to your normal GMT.

V3 Additions

- Only Range Trading – True or False. If True, the software will utilize the ADX indicator to only open trades when the market is ranging.
- Reverse Strategy – True or False. If True, the software will trade the exact opposite of the original strategy.
- One Set Trade per Day – True or False. If True, the software will only open 1 set of trades per day, then wait for the next day to trade again.