

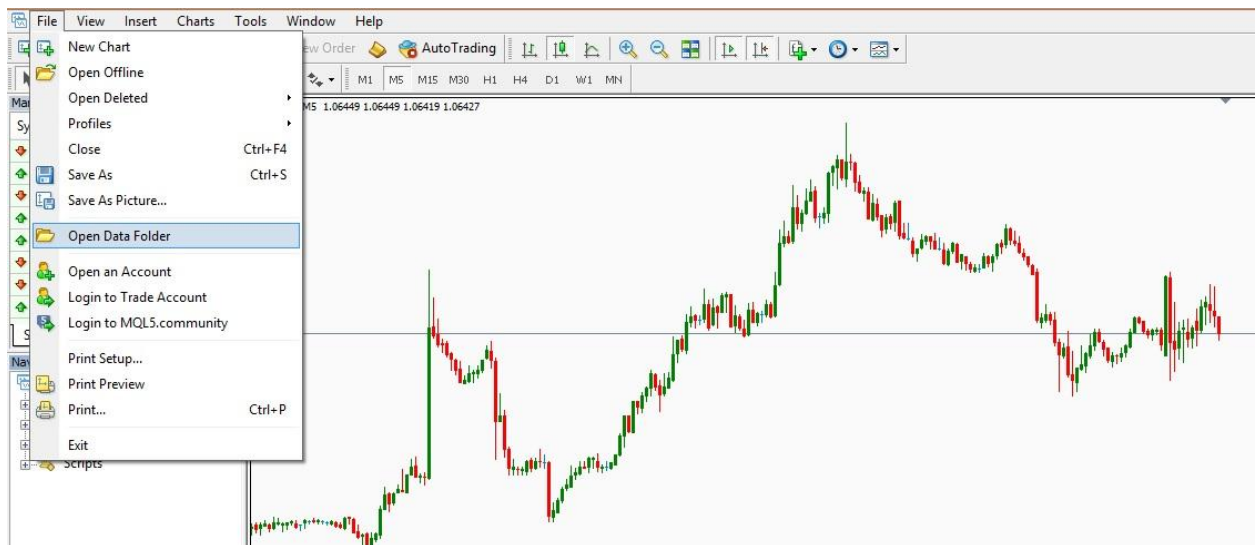
X DOUBLER



How To Install With Authentication Key

You only need Authentication Key And The EA:

1. Open Data Folder From Your Terminal



2. Open The MQL4 Folder:

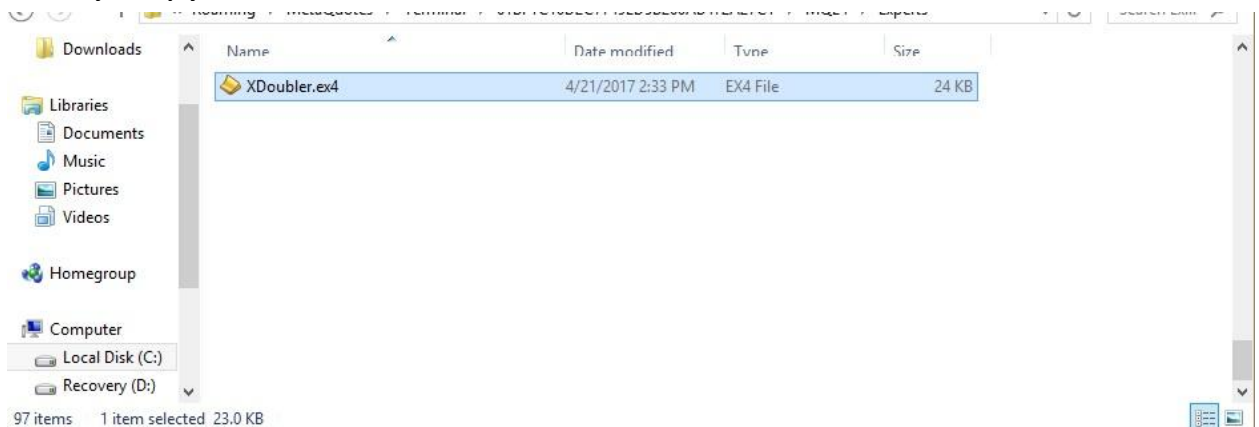
config	10/4/2016 8:30 AM	File folder
history	10/4/2016 8:30 AM	File folder
logs	1/5/2017 7:18 PM	File folder
MQL4	8/16/2016 1:52 PM	File folder
profiles	9/24/2016 8:06 PM	File folder
templates	9/24/2016 8:06 PM	File folder
tester	11/22/2016 11:55 ...	File folder

3. Open The Expert Folder:

Open The Expert Folder

Name	Date modified	Type	Size
Experts	1/5/2017 10:15 AM	File folder	
Files	10/2/2016 9:27 AM	File folder	
Images	2/8/2015 5:56 AM	File folder	
Include	3/13/2016 4:21 PM	File folder	
Indicators	1/5/2017 7:18 PM	File folder	
Libraries	10/11/2016 12:57 ...	File folder	
Logs	1/6/2017 12:37 PM	File folder	
Presets	8/29/2016 8:29 PM	File folder	
Projects	2/8/2015 5:56 AM	File folder	
Scripts	6/16/2016 12:59 PM	File folder	

4. Finally Copy The EA Into The Folder



The Next Thing You Need Is Restart Your MT4 Platform



Now we need to authenticate the EA to work:

Expert - XDoubler

About Common Inputs

Variable	Value
ab AuthenticationKey	
magicno	7077
TYPEA	true
StopAttempt	5
DollarAmount	100.0
EntryLot	0.01
Attemp2	0.01
Attemp3	0.02
Attemp4	0.02
Attemp5	0.02
Attemp6	0.02
Attemp7	0.01
Attemp8	0.01
Attemp9	0.01
Attemp10	0.01
Attemp11	0.01
Attemp12	0.01
Attemp13	0.01
Attemp14	0.01
Attemp15	0.01

insert key here

Load Save

OK Cancel Reset

If you have done everything perfectly;

You will see this:



Now let us talk about the settings:

Expert - XDoubler

About Common Inputs

Variable	Value
ab AuthenticationKey	
123 magicno	7077
TYPEA	true
123 StopAttempt	5
1/2 DollarAmount	100.0
1/2 EntryLot	0.01
1/2 Attemp2	0.01
1/2 Attemp3	0.01
1/2 Attemp4	0.01
1/2 Attemp5	0.01
1/2 Attemp6	0.01
1/2 Attemp7	0.01
1/2 Attemp8	0.01
1/2 Attemp9	0.01
1/2 Attemp10	0.01
1/2 Attemp11	0.01
1/2 Attemp12	0.01
1/2 Attemp13	0.01
1/2 Attemp14	0.02
1/2 Attemp15	0.02

What type of trader are you?

Load Save

TypeA: If set to **TRUE** it means once Xdoubler enter for a trade during a trending trade, it will continue placing trade in that direction until the trend changes. For example let say Xdoubler entered for buy once the trade is closed in profit.

Xdoubler will wait again for another buy trade signal and enter again and once the trade is closed in profit, Xdoubler will go for another buy trade once there is a signal. That is the reason if you want to make money fast you will set TypeA trade to TRUE.

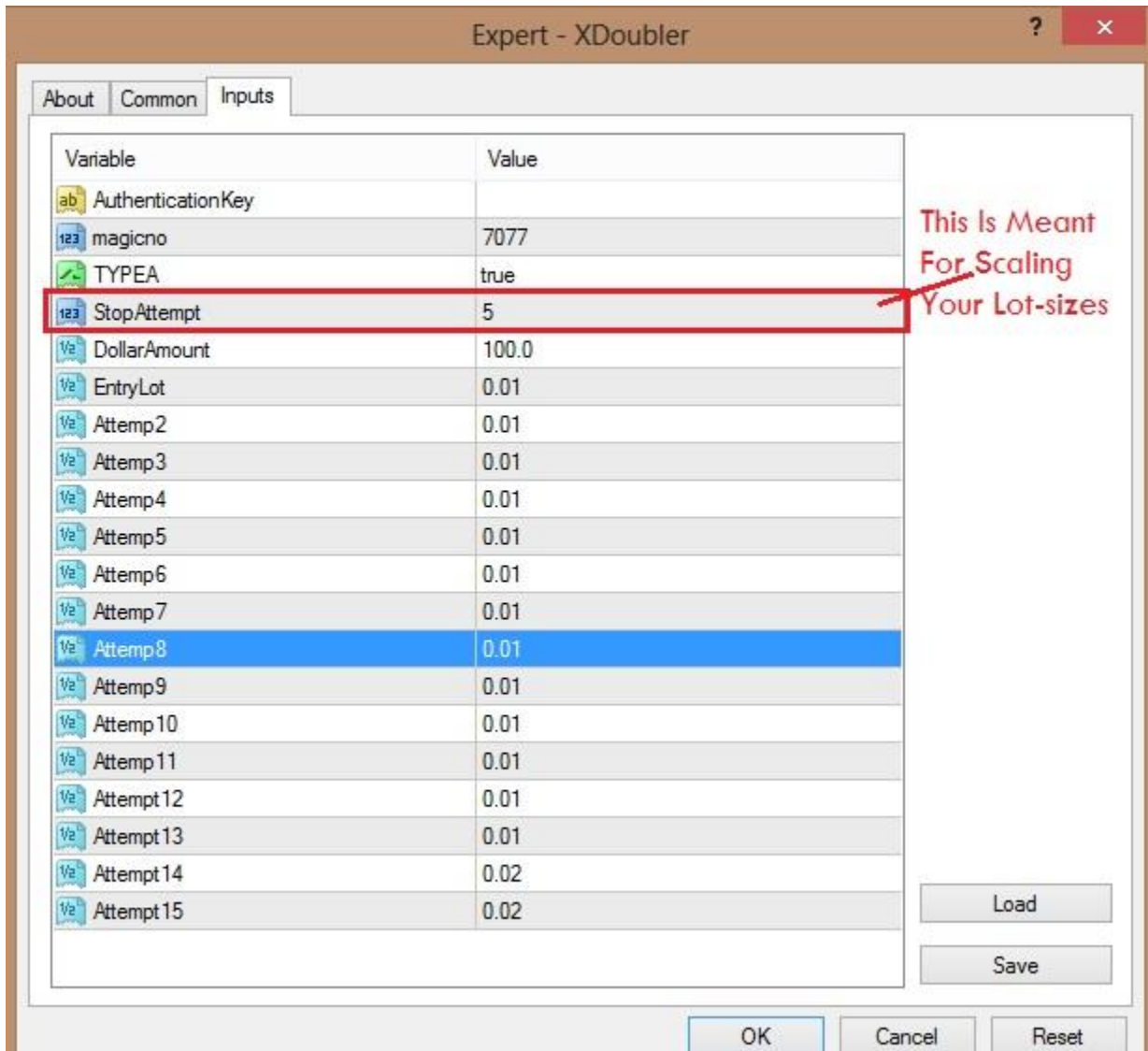
Note: *What most traders forget is that the trend is your friend until it stab you at your back. So if you are going to set TYPEA to true. Your account may get burnt anytime, if you don't set up your Entry Lot size and Attempt very well. Because you are trading aggressively.*

TypeB: If you set **TypeA** to **FALSE** it means you want Xdoubler to enter a trade just once when the market is trending. For example if the first order is buy, Xdoubler will enter for buy and once closed in profit, it will never enter for buy again. Now it will be waiting for only sell signal to come in before it places trade. And once Sell signal comes in, Xdoubler will sell again and once it is closed in profit, Xdoubler wont enter for sell trade again. It will be waiting for buy signal.

Note: *This type of settings is what I will refer to as: "make your pips and watch".*

Because you are not going to get stabled like the TYPEA settings, because when TYPEA is trading everytime, TypeB settings will be watching waiting for the trend to turn before it goes in again. This type of settings does not make you more pips but it will keep you safe. The trick I use is to use this type of settings on many pairs since Xdoubler can work on any pair. Please be careful so that you wont expose your account too much to trading.

StopAttempt



The screenshot shows the 'Expert - XDoubler' dialog box with the 'Inputs' tab selected. A table lists various variables and their values. The 'StopAttempt' variable is highlighted with a red box, and a red arrow points to it from a text annotation on the right.

Variable	Value
AuthenticationKey	
magicno	7077
TYPEA	true
StopAttempt	5
DollarAmount	100.0
EntryLot	0.01
Attemp2	0.01
Attemp3	0.01
Attemp4	0.01
Attemp5	0.01
Attemp6	0.01
Attemp7	0.01
Attemp8	0.01
Attemp9	0.01
Attemp10	0.01
Attemp11	0.01
Attemp12	0.01
Attemp13	0.01
Attemp14	0.02
Attemp15	0.02

This Is Meant For Scaling Your Lot-sizes

Buttons: Load, Save, OK, Cancel, Reset

This is very essential in both manual trading and auto trading. You and I are not God to know when the market will move towards our direction. We don't know if the market will retrace down before going up or retrace up before moving down. That is the reason this element is coded into Xdoubler.

*For example If you want to use 0.05 lot size on a particular trade. Instead of inputing 0.05 into **EntryLot**, You can split the lot sizes like this:*

XDoublor				
Testing Inputs Optimization				
Variable	Value	Start	Step	Stop
<input type="checkbox"/> AuthenticationKey				
<input type="checkbox"/> magicno	7077	7077	0	0
<input type="checkbox"/> TYPEA	false	false		true
<input type="checkbox"/> StopAttempt	6	10	0	0
<input type="checkbox"/> DollarAmount	30.0	30.0	0.0	0.0
<input type="checkbox"/> EntryLot	0.01	0.01	0.0	0.0
<input type="checkbox"/> Attemp2	0.02	0.04	0.0	0.0
<input type="checkbox"/> Attemp3	0.02	0.09	0.0	0.0
<input type="checkbox"/> Attemp4	0.01	0.18	0.0	0.0
<input type="checkbox"/> Attemp5	0.02	0.36	0.0	0.0
<input type="checkbox"/> Attemp6	0.02	0.72	0.0	0.0
<input type="checkbox"/> Attemp7	0.02	1.44	0.0	0.0
<input type="checkbox"/> Attemp8	0.02	2.9	0.0	0.0
<input type="checkbox"/> Attemp9	0.02	2.9	0.0	0.0
<input type="checkbox"/> Attemp10	0.02	2.9	0.0	0.0
<input type="checkbox"/> Attemp11	0.02	2.9	0.0	0.0
<input type="checkbox"/> Attemp12	0.02	2.9	0.0	0.0
<input type="checkbox"/> Attemp13	0.02	2.9	0.0	0.0
<input checked="" type="checkbox"/> Attemp14	0.02	2.9	0.0	0.0
<input type="checkbox"/> Attemp15	0.02	2.9	0.0	0.0

Let's do the math:

EntryLot+Attempt2+Attempt3 will give 0.05 lot size.

So how do we tell the Xdoubler that once price touches Attempt 4, you want it to close all trades.

Just Add **3** to **Attempt3**, that will give **6**.

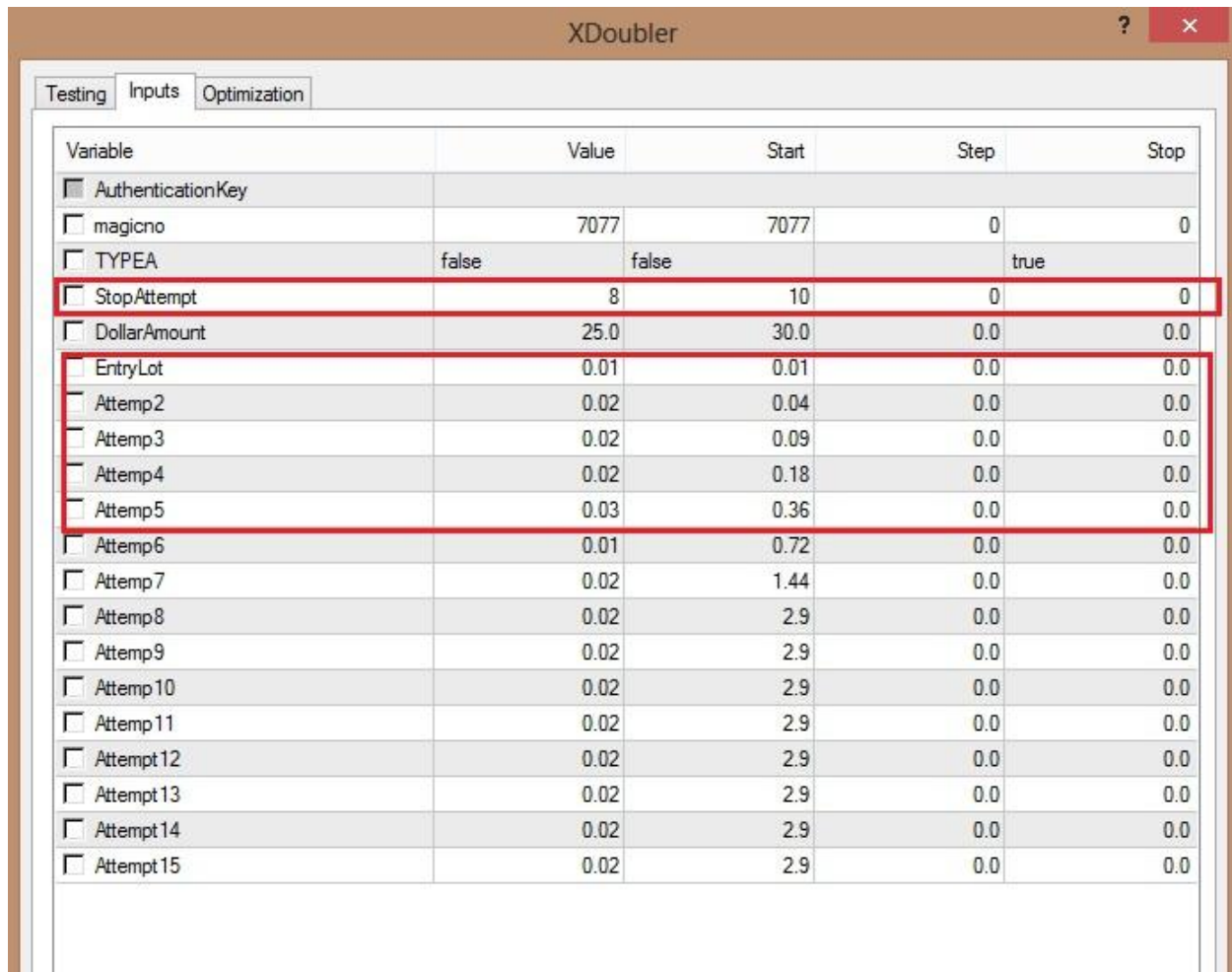
That is the reason I set **6** in the **StopAttempt** input.

So you will always add **3** to any attempt number to get the **StopAttempt** input.

So my advice is to set the next Attempt you don't need to a very lower lotsize so that you wont be affected with little loss of the spread while Xdoubler is closing all the trades. In this example Attempt 4 is set to 0.01.

Let me talk about another example so that you can understand..

Let Azzume you want to risk 0.1 on everytrade. You can split your lots like this.



Variable	Value	Start	Step	Stop
<input type="checkbox"/> AuthenticationKey				
<input type="checkbox"/> magicno	7077	7077	0	0
<input type="checkbox"/> TYPEA	false	false	true	
<input type="checkbox"/> StopAttempt	8	10	0	0
<input type="checkbox"/> DollarAmount	25.0	30.0	0.0	0.0
<input type="checkbox"/> EntryLot	0.01	0.01	0.0	0.0
<input type="checkbox"/> Attemp2	0.02	0.04	0.0	0.0
<input type="checkbox"/> Attemp3	0.02	0.09	0.0	0.0
<input type="checkbox"/> Attemp4	0.02	0.18	0.0	0.0
<input type="checkbox"/> Attemp5	0.03	0.36	0.0	0.0
<input type="checkbox"/> Attemp6	0.01	0.72	0.0	0.0
<input type="checkbox"/> Attemp7	0.02	1.44	0.0	0.0
<input type="checkbox"/> Attemp8	0.02	2.9	0.0	0.0
<input type="checkbox"/> Attemp9	0.02	2.9	0.0	0.0
<input type="checkbox"/> Attemp10	0.02	2.9	0.0	0.0
<input type="checkbox"/> Attemp11	0.02	2.9	0.0	0.0
<input type="checkbox"/> Attemp12	0.02	2.9	0.0	0.0
<input type="checkbox"/> Attemp13	0.02	2.9	0.0	0.0
<input type="checkbox"/> Attemp14	0.02	2.9	0.0	0.0
<input type="checkbox"/> Attemp15	0.02	2.9	0.0	0.0

Let's do the math

EntryLot+Attempt2+Attempt3+Attempt4+Attempt5 will give 0.1 lotsize.

So how do we tell the Xdoubler that once price touches Attempt 6, you want it to close all trades.

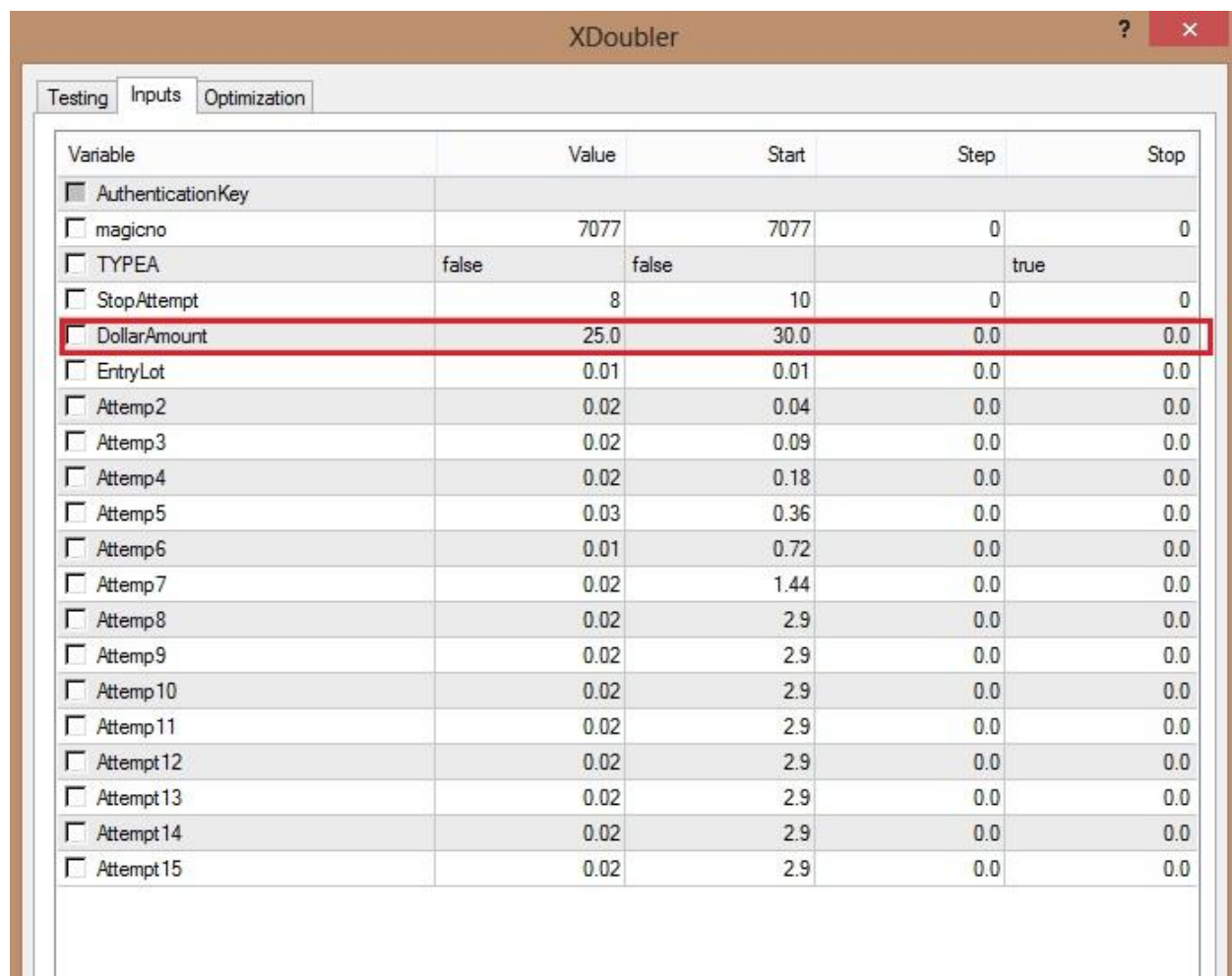
Just Add **3** to **Attempt5** that will give **8**.

That is the reason I set **8** in the **StopAttempt** input. I hope you get it now!

Note: If your Attempt get to number 15, which means your StopAttempt is 18.

(3 + Attempt 15). Do not worry. Xdoubler as been coded to set Attempt 16 lotsize to 0.01.

*Now Let's talk about **DollarAmount***



The screenshot shows the Xdoubler application window with the 'Optimization' tab selected. A table lists various variables and their optimization parameters. The 'DollarAmount' row is highlighted with a red border.

Variable	Value	Start	Step	Stop
<input type="checkbox"/> AuthenticationKey				
<input type="checkbox"/> magico	7077	7077	0	0
<input type="checkbox"/> TYPEA	false	false		true
<input type="checkbox"/> StopAttempt	8	10	0	0
<input type="checkbox"/> DollarAmount	25.0	30.0	0.0	0.0
<input type="checkbox"/> EntryLot	0.01	0.01	0.0	0.0
<input type="checkbox"/> Attemp2	0.02	0.04	0.0	0.0
<input type="checkbox"/> Attemp3	0.02	0.09	0.0	0.0
<input type="checkbox"/> Attemp4	0.02	0.18	0.0	0.0
<input type="checkbox"/> Attemp5	0.03	0.36	0.0	0.0
<input type="checkbox"/> Attemp6	0.01	0.72	0.0	0.0
<input type="checkbox"/> Attemp7	0.02	1.44	0.0	0.0
<input type="checkbox"/> Attemp8	0.02	2.9	0.0	0.0
<input type="checkbox"/> Attemp9	0.02	2.9	0.0	0.0
<input type="checkbox"/> Attemp10	0.02	2.9	0.0	0.0
<input type="checkbox"/> Attemp11	0.02	2.9	0.0	0.0
<input type="checkbox"/> Attemp12	0.02	2.9	0.0	0.0
<input type="checkbox"/> Attemp13	0.02	2.9	0.0	0.0
<input type="checkbox"/> Attemp14	0.02	2.9	0.0	0.0
<input type="checkbox"/> Attemp15	0.02	2.9	0.0	0.0

This is the number of dollar amount you want to target per trade.. If you set it to 25, it means once Xdoubler calculates open trades and it is equal to \$25 it will close trades.

So if you set it to 1, it means once Xdoubler calculates open trades and it is equal to \$1 it will close trades.

***Note: Attach Xdoubler to either 1 hour or 4 hours time frame.
It will work the same.***

Xdoubler can be used on any pair too.

support@fxsecretpackage.com