



Frequently Asked Questions about Expert Advisors (EAs)

Getting started:

[How to install a new EA ?](#)

[How to enable trading with EAs and dll calls in MetaTrader 4 terminal?](#)

[How to load preset settings into EA ?](#)

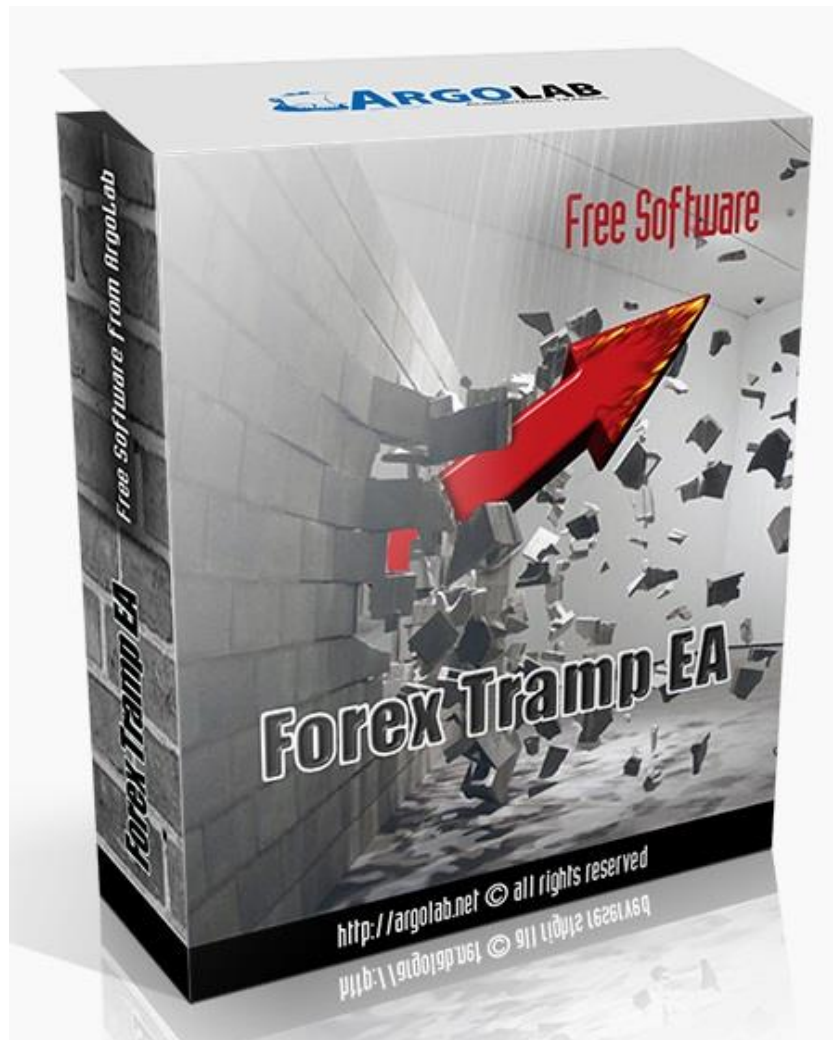
Recommended brokers:

[RoboForex](#) , [Forex4you](#) , [Alpari](#) , [FxOpen](#) , [InstaForex](#)

Recommended VPS:

[myForexVPS](#) , [myFXvps](#)

Expert Advisor Forex Tramp



Description of the trading strategy, backtests, monitorings, sets, list of supported currency pairs, timeframes and technical details are available on the official web-page and on the ARGOLab forum.

Subscribe for the actual news and free regular updates of the EA.

Official web-site: <http://www.argolab.net/forextrampea.html>

Support and discussion: <http://forumargolab.net/threads/forex-tramp-ea.37/>

Settings:

SetName: The name of the current set. For example, if we set SetName = My Dream Set, the name “My Dream Set” will be displayed in the information panel of the EA.

Flag_Stop (TRUE/FALSE): If this flag is set to TRUE, EA will not open new after the current trade is closed.

Filter: Parameter of the digital filter used for determination of the trading channel.

Filter2: Parameter of the second digital filter used for determination of the trading channel.

TPfact: Take-profit level, in units of Filter.

SLfact: Stop-loss level, in units of Filter.

TakeProfit_Martin: This parameter adjusts the increase of the target profit after each false breakout.

Indent: Shift of the position of the pending orders from the trading channel borders.

IgnoreDDBeforeDate: The drawdown closed before this date will be ignored by EA in calculations of the volume of the next order.

GapeProtect (TRUE/FALSE): Activates the gape protection feature.

LotSize: Base lot size.

MaxLotSize: Maximal allowed lot size. When this lot size is reached, EA will continue trading without increasing the lot size of the next orders.

AutoMM (TRUE/FALSE): When AutoMM = TRUE, the base lot LotSize will be scaled by the ratio (Account balance)/ AutoMMEquity. So, for deposit \$2000 and AutoMMEquity=1000, the starting lot of the basket without trend will be $\text{LotSize} * (2000/1000) = \text{LotSize} * 2$. Each time the account balance is increased by 1/10 AutoMMEquity as a result of profitable trading, the starting lot will be modified accordingly.

AutoMMEquity: AutoMM parameter.

Magic: A unique identifier used by EA to identify and manage his positions. If you use other robots on the same currency pair in the same Metatrader 4 terminal, make sure that each of them has a different Magic.).

Verbose (TRUE/FALSE): Enable/disable writing in the Experts tab of your MetaTrader 4 terminal.

comment_color: The color of the text in the information panel.

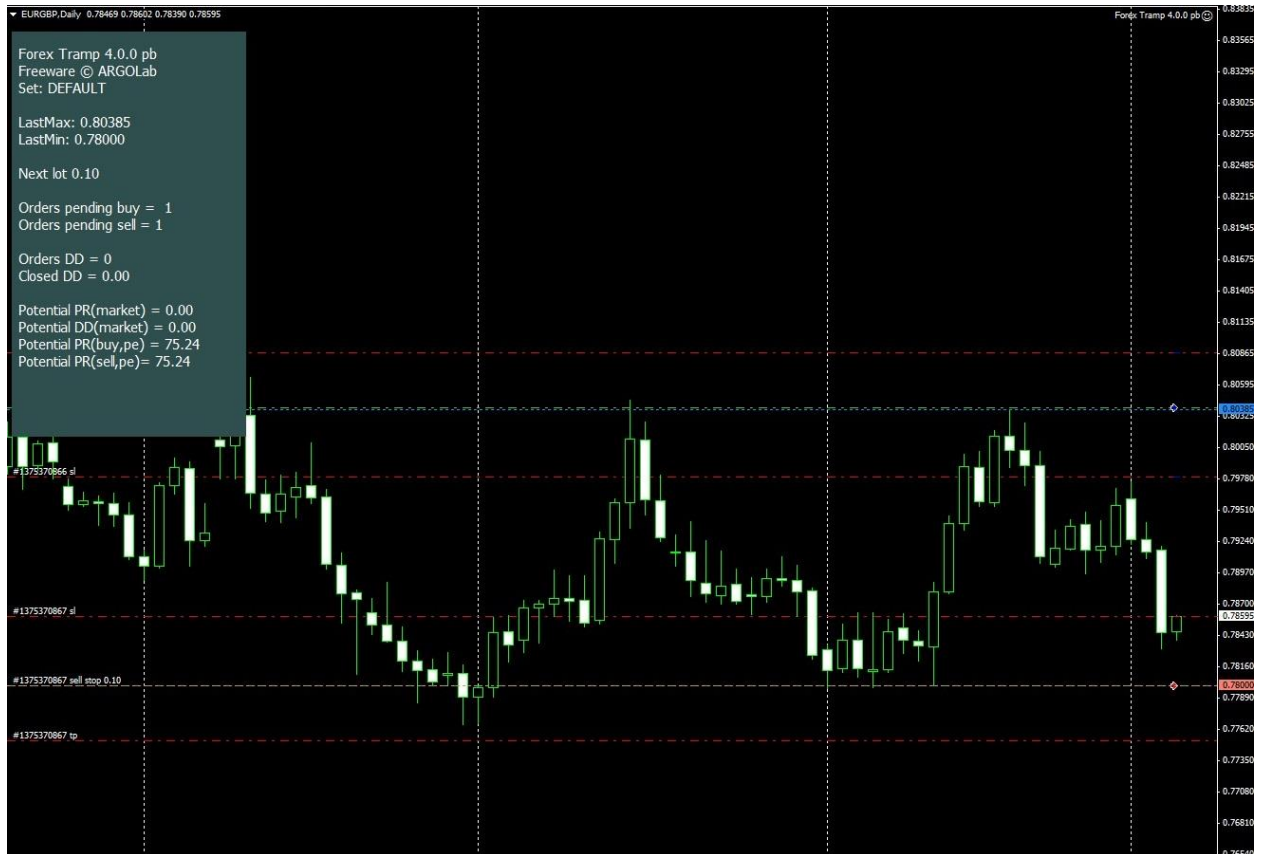
comment_fontsize: The font size of the text in the information panel.

comment_lineheight: The distance between the lines in the text in the information panel.

DrawLines: Draw the trading channel on the chart.

ColorUp: color of the upper border of the channel.

ColorLo: color of the lower border of the channel.



<http://ARGOLab.net/>

<http://ForumARGOLab.net/>