



HOW TO INSTALL FOREXSEVEN

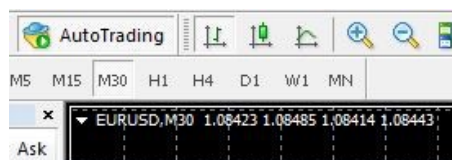
STEP 1: Unpack ForexSeven archive in to any folder

STEP 2: Run your MT4 terminal and go to menu File -> Open Data Folder.

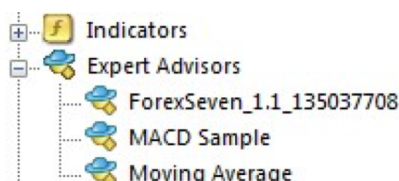
STEP 3: Copy MQL4 folder from your unpacked directory into opened MT4 terminal directory

STEP 4: Restart you MT4 terminal. Login in to your trading account.

Once Meta Trader 4 opens, look on the left for Market Watch. It will show a listing of Pairs. Locate **EURUSD** only, and right click it, then click Chart Window. You should then see a chart on your screen that looks like this. Click on chart that popped up and click **M30** at the TOP middle bar of MT4.

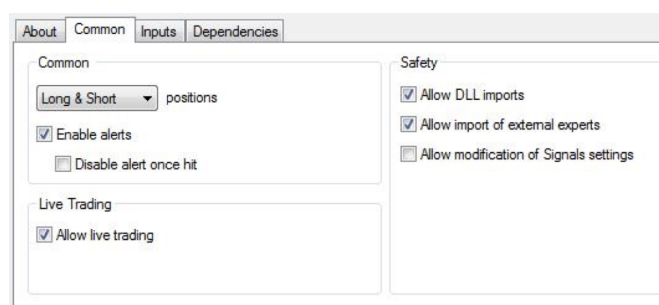


On the left screen you will see the following under the Navigator Box. Click the [+] next to Expert Advisors. Look for Forex Seven in the list. Click ForexSeven and drag it to the chart on the right that you opened.



! DO NOT PUT IT ON ANY OTHER PAIRS IF YOU DO YOU WILL GET DUPLICATE TRADES !

Make sure the check marks match the image below for the window (Common tab):



SETTINGS

We do not recommend changing any settings other than the Risk, Lot and AccountMicro settings unless you have trading experience.

CloseAllOrder = **FALSE** this parameter you should use for properly shutdown the system. You can not do that manually, because the system will open additional orders.

StartNewTrade = **TRUE** if you want shutdown the EA, but don't want to close the current order with minus and wait until it'll be closed with Take Profit and then a new concatenation won't start.

Lot - The lot size for the first order.

AutoLots - When set to **TRUE** the robot will auto calculate lot size based on the percent risk you choose in the setting below this one. If **FALSE**, then you can use a set lot size using the Lot setting above this.

Risk - The percentage of the deposit which you are ready to take risks. In the worst circumstances, you will not lose more than the value which you set.

Magic - You can leave this as default this is a unique number that allows the robot to track its trades.

AccountMicro – you should set to **TRUE** if you trading on micro-account. You shouldn't enable it for standard and cent accounts with normal lot.

RECOMMENDATIONS

We recommend you use the auto calculation of the lot (**AutoLots=true**) and set parameter Risk not more than **35%**. The default settings are recommended as well. You need to have about **\$3400** on your deposit.

If you want trading with fix lot set parameter **Lot =0,01** for deposit **\$1200 (it's for 100% risk)**. You can calculate Lot size for your deposit following this proportion.